

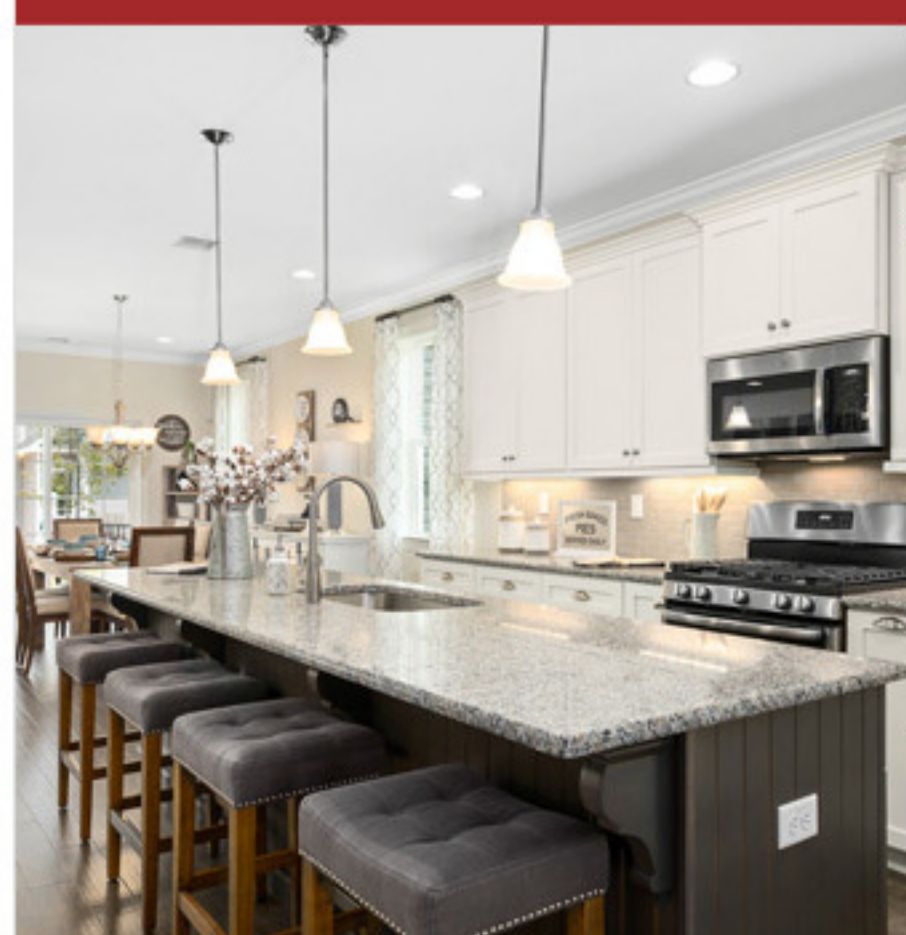
GRAND OPENING

MERCER and ROSEDALE MODEL HOMES

Now Open Daily 10am - 5pm

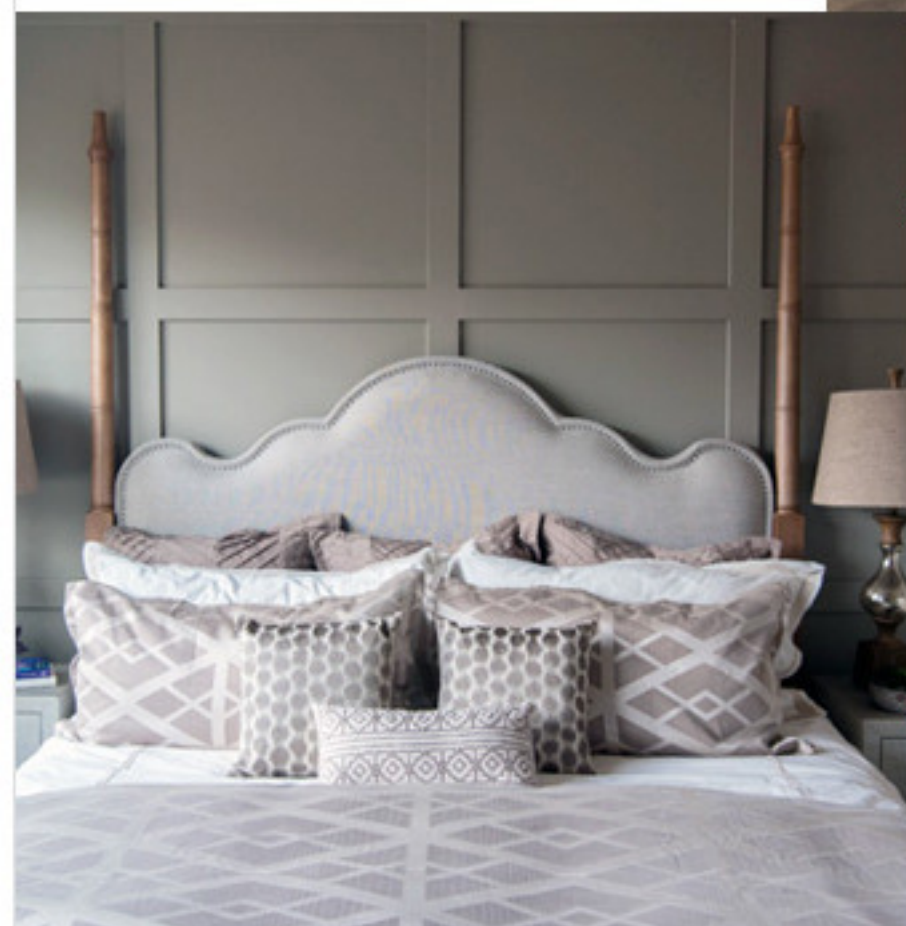
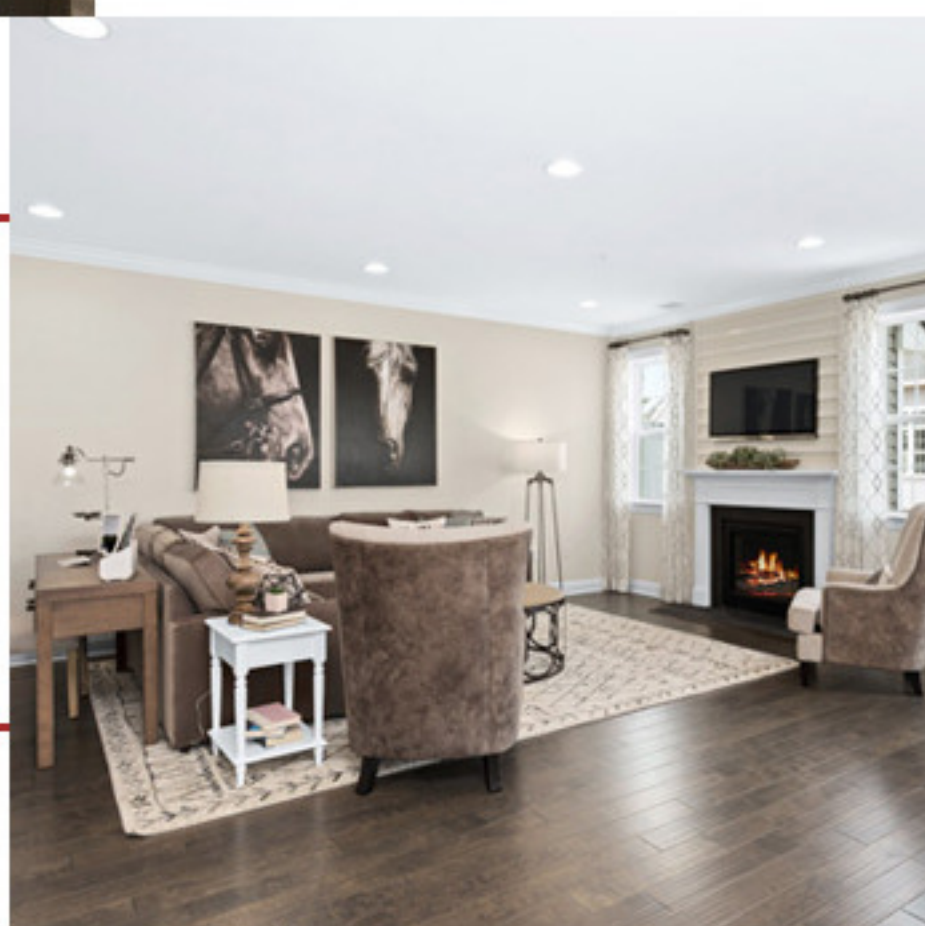
We're excited to unveil the
furnished Mercer master down and
Rosedale master up models!

These homes feature open layouts, 9 ft.
ceilings on the first and second floors, and
designer finishes throughout. Join us to be
one of the first that gets to see these
exciting, new townhomes and villas!



Granite
countertops
and 42" maple
cabinets in the
kitchen

9 ft. ceilings on
the first and
second floor with
open layouts and
designer finishes



Master down
suites and
second floor lofts
(per plan)

Heritage at Pennington **FEATURES:**

- Spacious townhomes with four home designs to choose from and up to 2,500 sq. ft. of living space
- Three bedrooms, two-and-a-half baths and 1-2-car garages
- Gas fireplaces
- Just a short walk from downtown Pennington and less than 20 minutes to the NJ Transit® Hamilton Train Station
- Part of the highly rated Hopewell Valley Regional School District in Mercer County
- Close to Route 31 and I-95 with easy access to the NJ Turnpike, I-295 and Route 1

Priced from the mid \$400s



American Properties
AT PENNINGTON, LLC

AMERICANPROPERTIES.NET • 609-559-5904

8 Old Foundry Drive, Pennington, NJ 08534

GPS: 105 West Franklin Avenue